



# WINDOW PRODUCTS LIMITED

Effective solutions for windows manufacturers and fitters

Unit 4203 Oakfield Close,  
Tewkesbury Business Park,  
Tewkesbury, Glos  
GL20 8PF

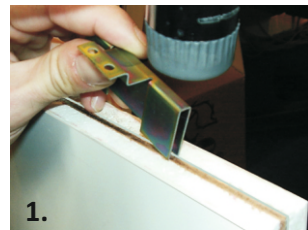
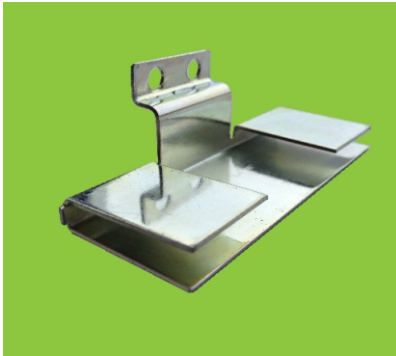
T: 01684 290944

E: sales@gtwindowproducts.co.uk

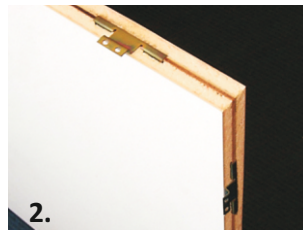
W: www.gtwindowproducts.co.uk

## GT Securi-Panel

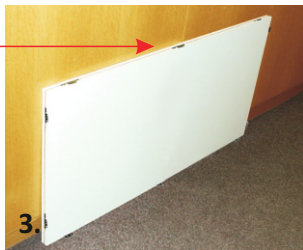
Patent No. GB2416366B



1. With the Aluminium Skin to the outside, tap Securi-Panel into position 60mm from corner to edge of clip



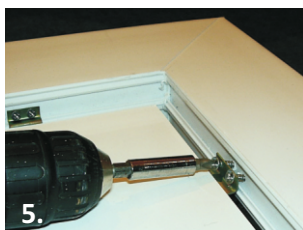
2. Repeat Step 1 to position two clips per corner



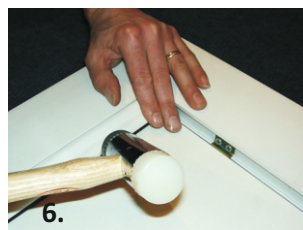
3. Full panels will need extra clips at the center



4. Position the panel into the aperture



5. Fix each clip into the profile. It is not necessary for the screws to be driven right home.



6. On some systems it may be necessary to notch centre pips and double leg beads around the Securi-Panel to obtain a flat base.

**SECURI-PANEL** is a panel fixing component manufactured from high carbon steel and is designed to be used specifically with door panels containing 6mm thick centre core reinforcement. We recommend the centre core is made up of 1mm Aluminium sheet and 5mm Plywood. It will suit most PVCu door systems.

The **SECURI-PANEL** component is located onto the centre core reinforcement and is then screw-fixed to the internally beaded door frame/sash. Fitting the concealed **SECURI-PANEL** component effectively renders the removal of the door panel virtually impossible without destroying the door frame.

Doors glazed with 5mm reinforced panels and the appropriate numbers of **SECURI-PANEL** components, correctly positioned, have successfully passed 'hard and soft body impact' tests and human intervention tests in accordance with PAS 24.

### Fitting

For ½ panels fit two per corner. For full panels fit extra clips at mid-rail height as shown.

All fixings, where possible, should go into steel reinforcing.

## General Instruction

All drawings are not to scale  
Reinforcement and fixings have been omitted for clarity  
UK Fasteners screws were used for testing when required

